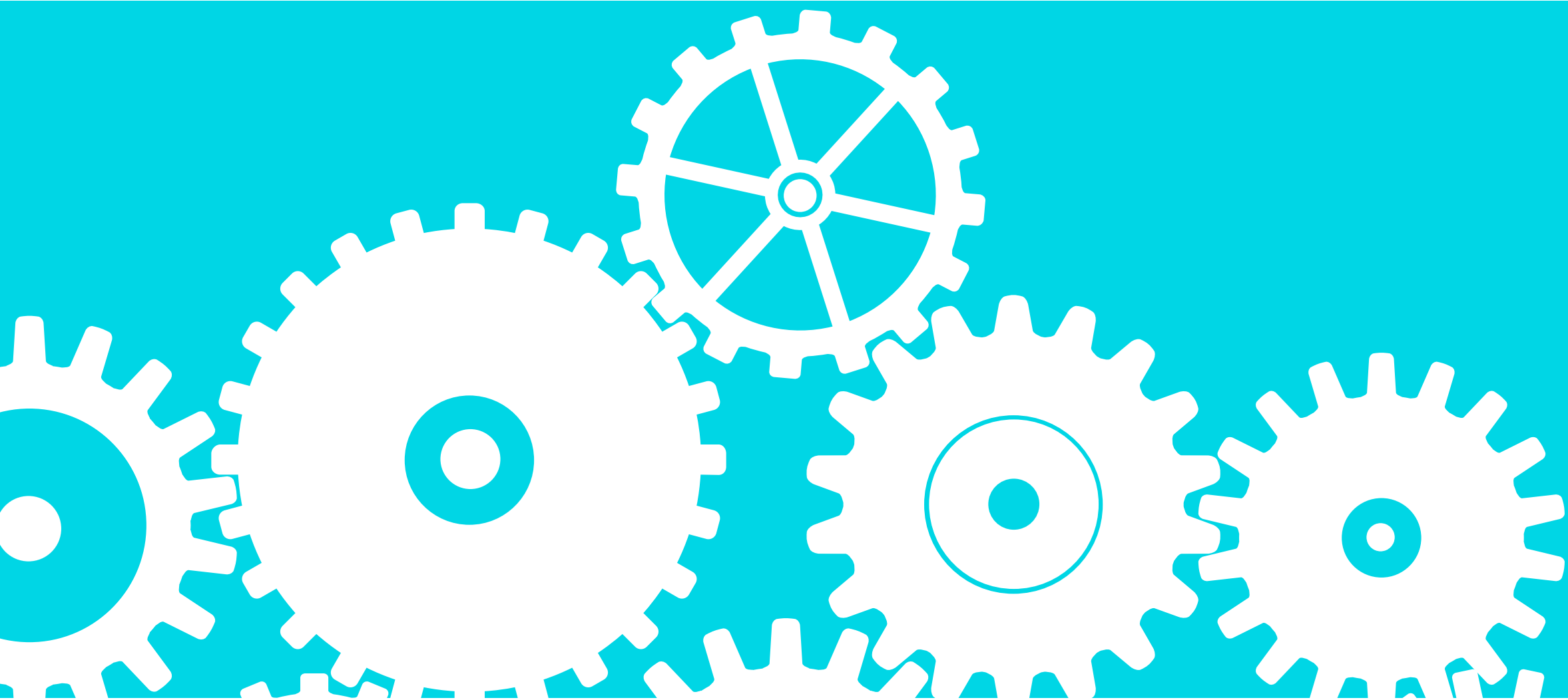


MOTORISED SOMFY ROLLER BLINDS

*A GUIDE TO WIRING & CONTROLS
for SOMFY SONESSE 40RTS 240v RTS motors*

electroblind.co.uk
specialists in motorised blinds



"SOMFY RTS MOTOR HOW DOES IT WORK?"

Just like a TV, you simply plug it in and operate / programme it from a remote control.

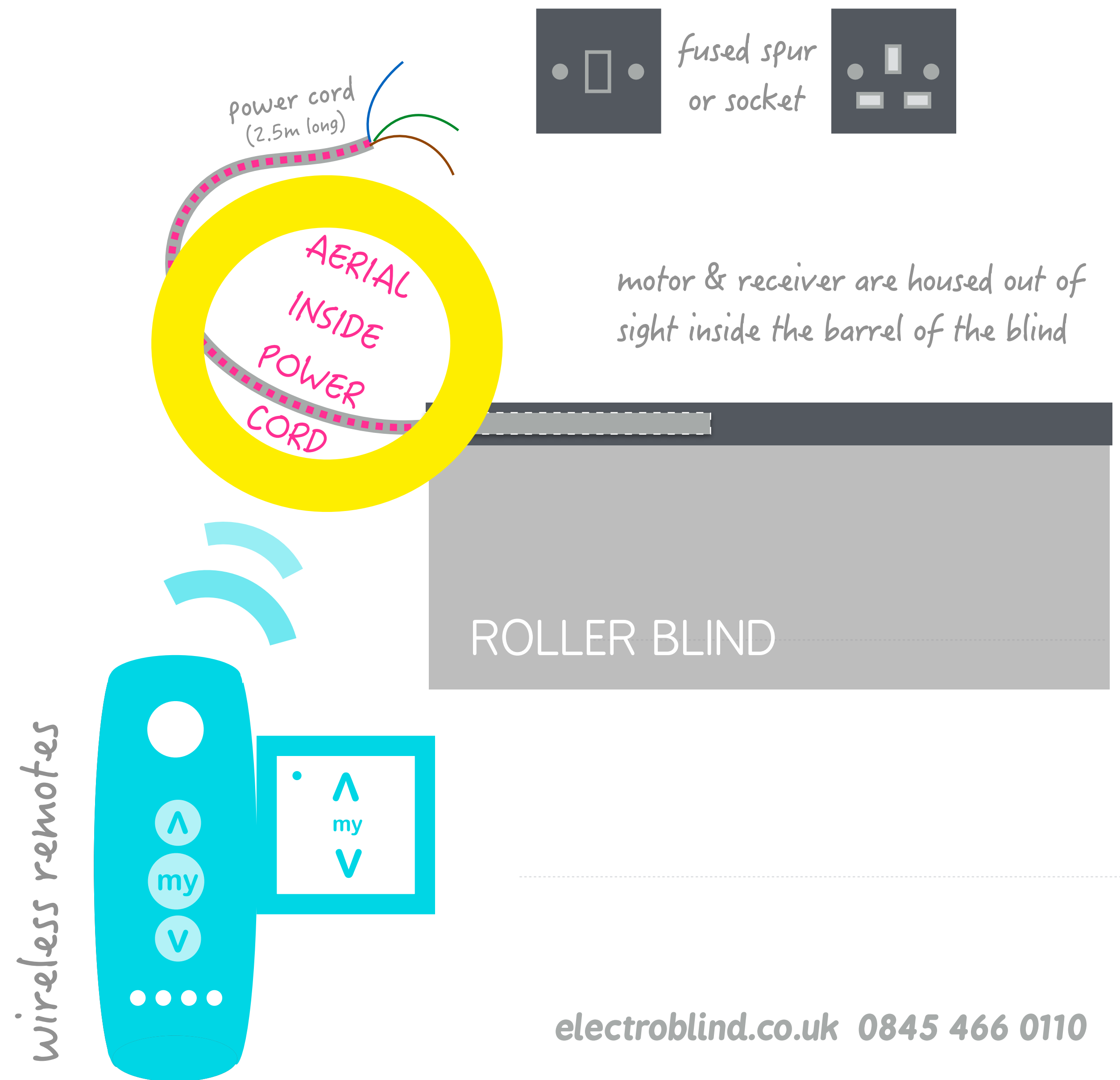
The remote controls 'talks' to a receiver inside the motor and you operate your blind at the touch of a button.

The motors are tubular and housed inside the barrel of your blind. A 2.5m long power cord exits at one end.

There's a selection of remote controls that let you operate multiple blinds individually or in groups. Or both...



All electrical connections must be made by a suitably qualified professional.



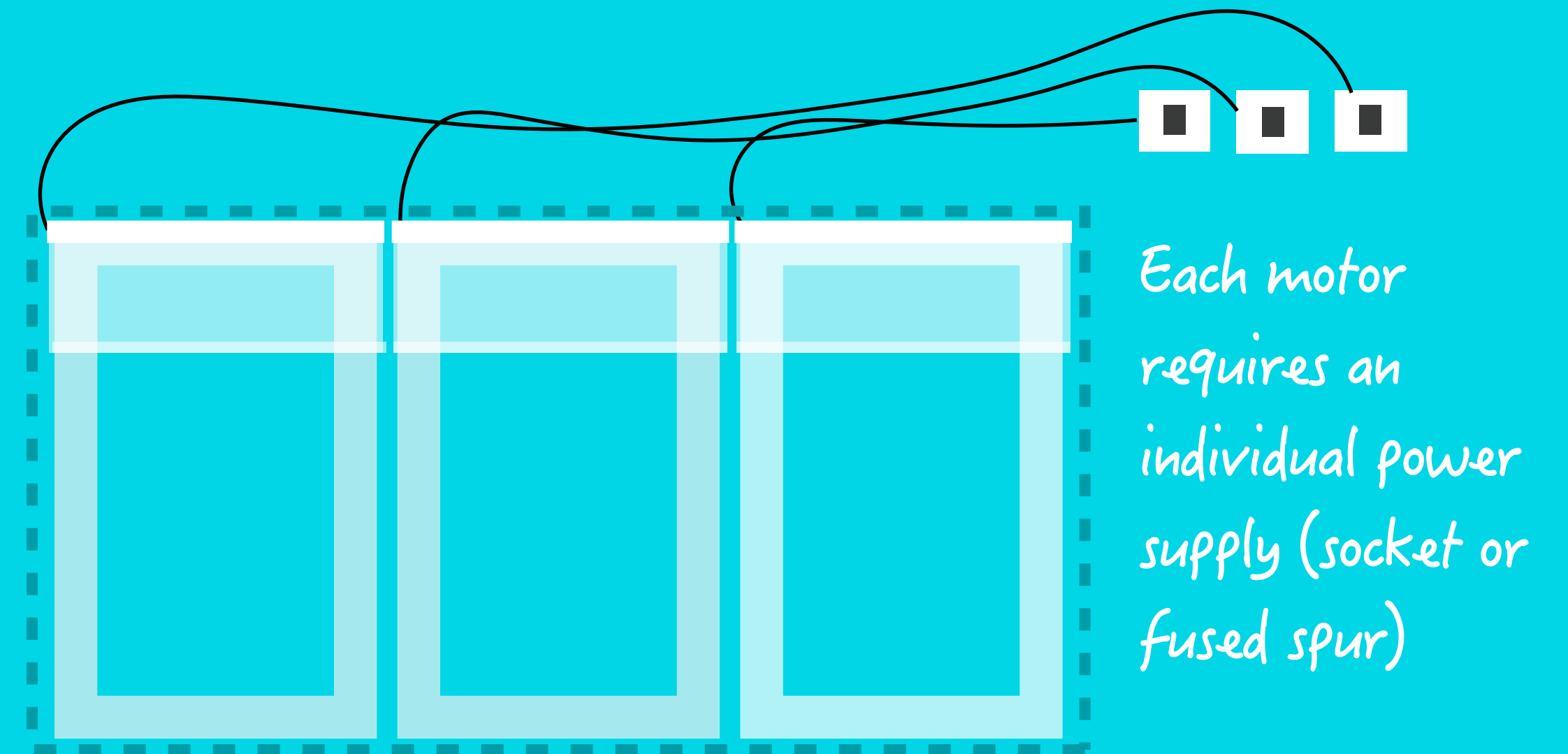
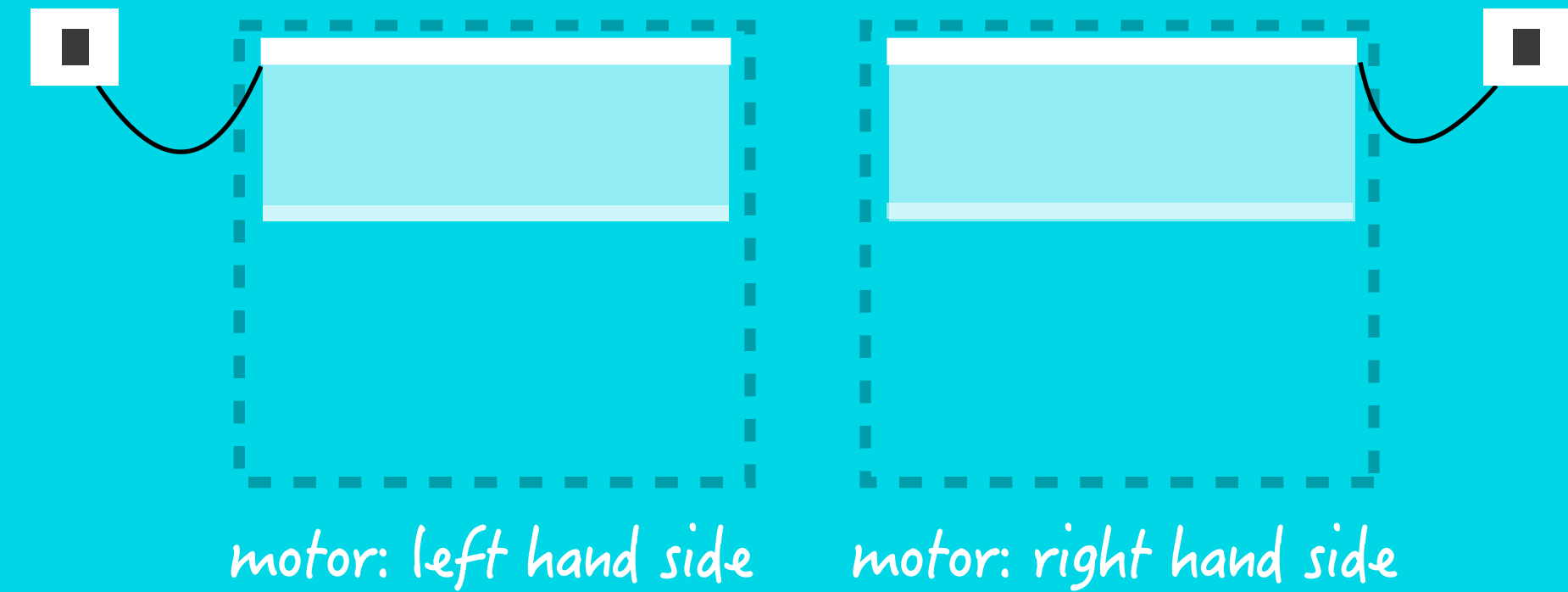
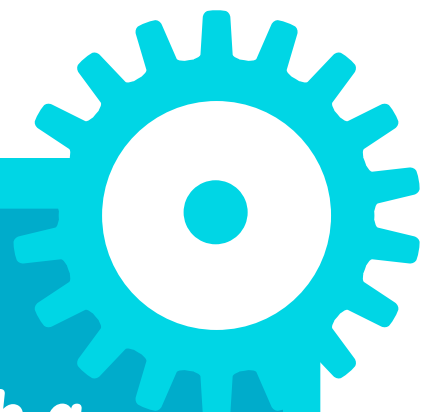
“WIRING RULES THE BASICS

Your Somfy RTS motor can be supplied to the left or right hand side.

It can be plugged into a socket or hard-wired into a fused spur.

If you have more than one blind to a window, each one requires an individual switched socket or a fused spur in order to isolate the motor – for safety and also to facilitate programming.

Unless we're told otherwise, all of our blinds are supplied - as standard - with a motor on the right hand side.

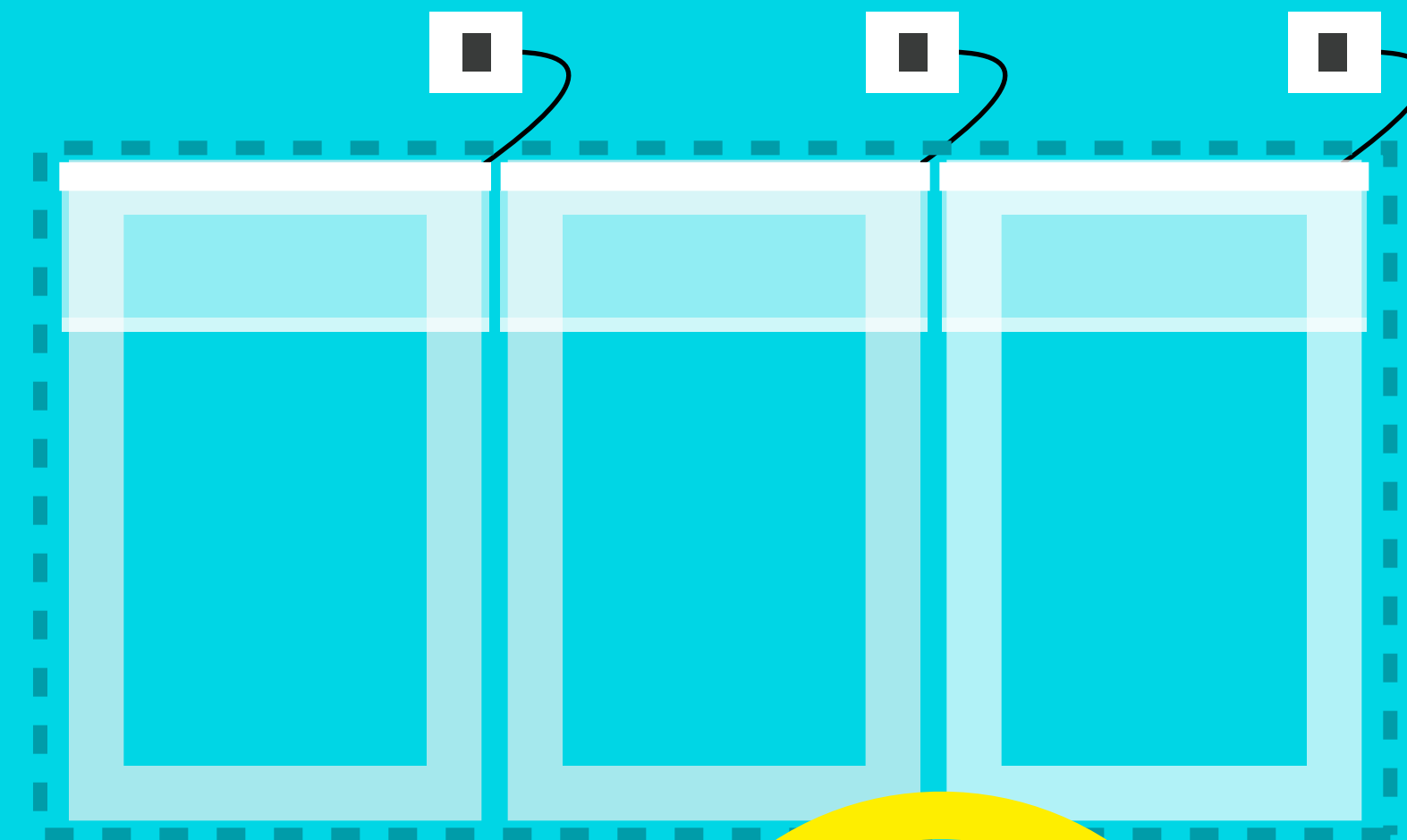


“WIRING RULES MULTIPLE ADJACENT RTS MOTORS

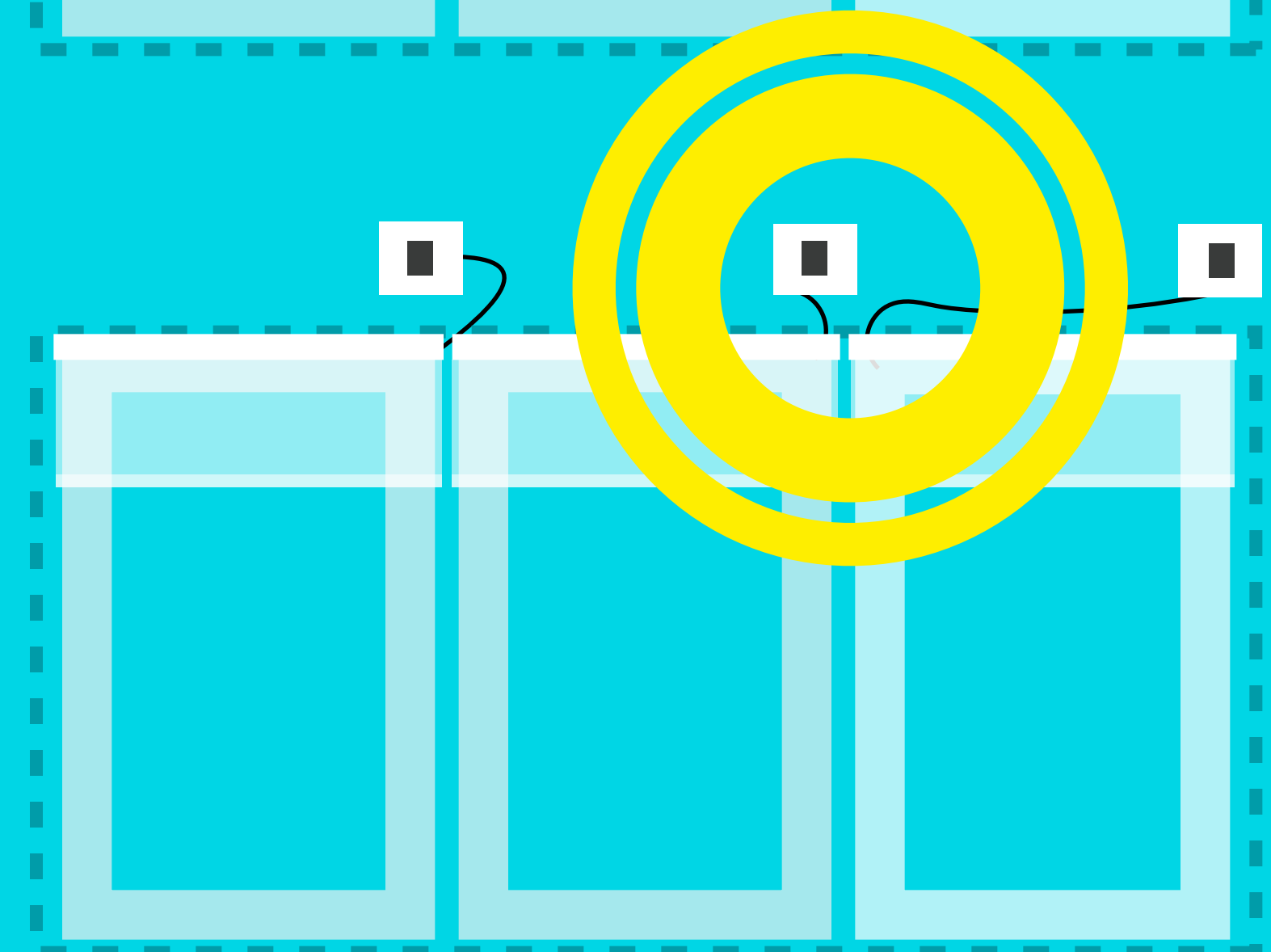
Motorised blinds can be fitted side by side. But the motors themselves should keep their distance.

Motors positioned so that their *motor heads are adjacent* can cause interference to signalling, which means that your blinds operate erratically.

It's not always a problem, but it's better to be safe than sorry...

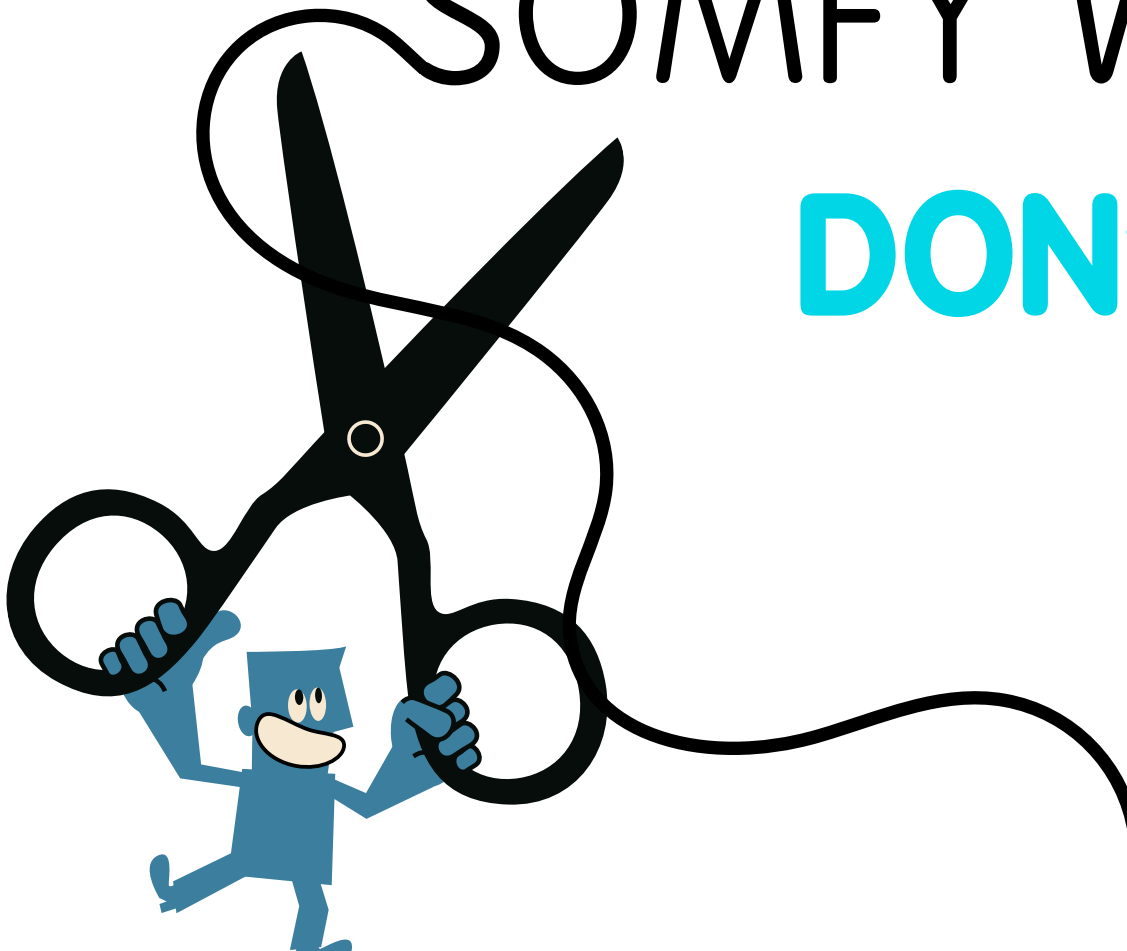


*Receivers/Aerials
are suitably
distanced*



*Adjacent
receivers/aerials
can cause
interference*

"SOMFY WIRING WARNING ! DON'T CUT THE POWER CORD...

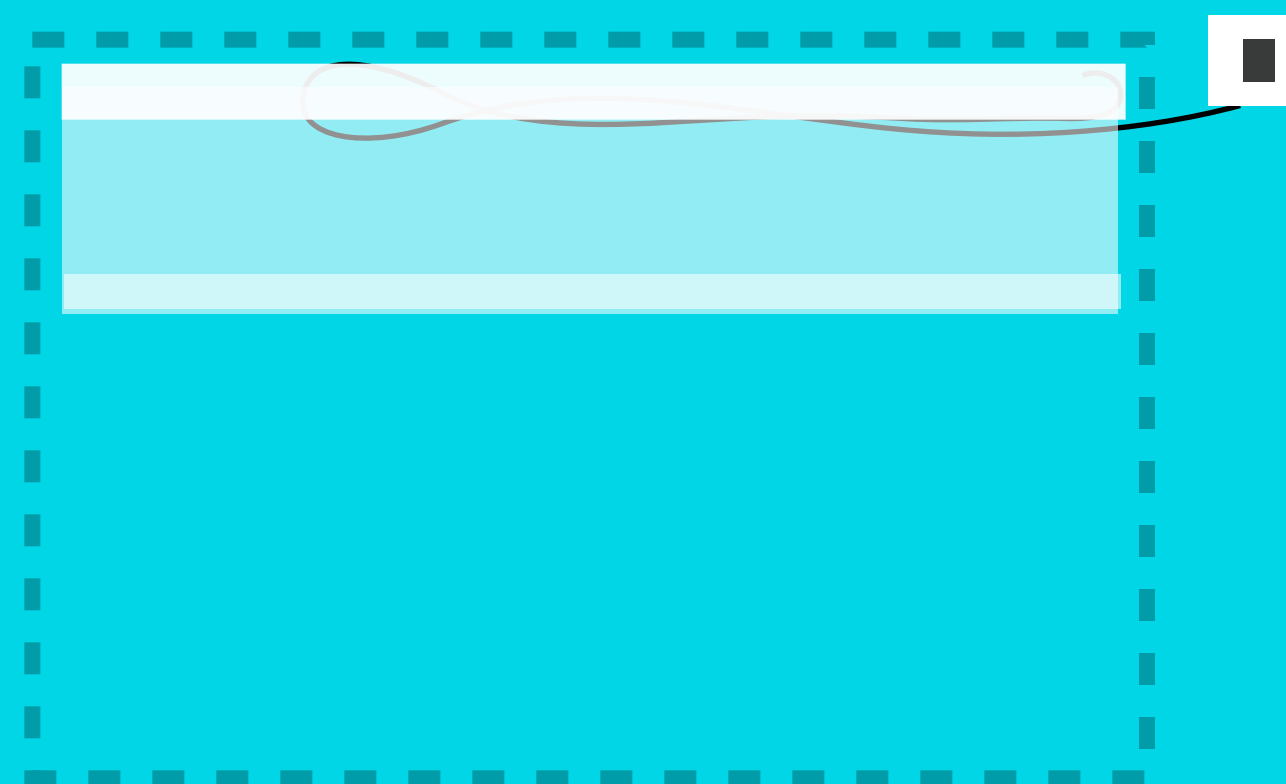


You'll need to secure your Somfy power cord out of the way - this is generally above / behind the blind.

Or you can loosely loop the spare Somfy power cord at the side. This works well with plasterboard walls - you can often drop spare wire behind.

Your aerial is inside the power cord. Cut it off and you'll need a new motor.

Replacing it is a 'factory-fit'. But realistically you'll need to replace your entire blind...



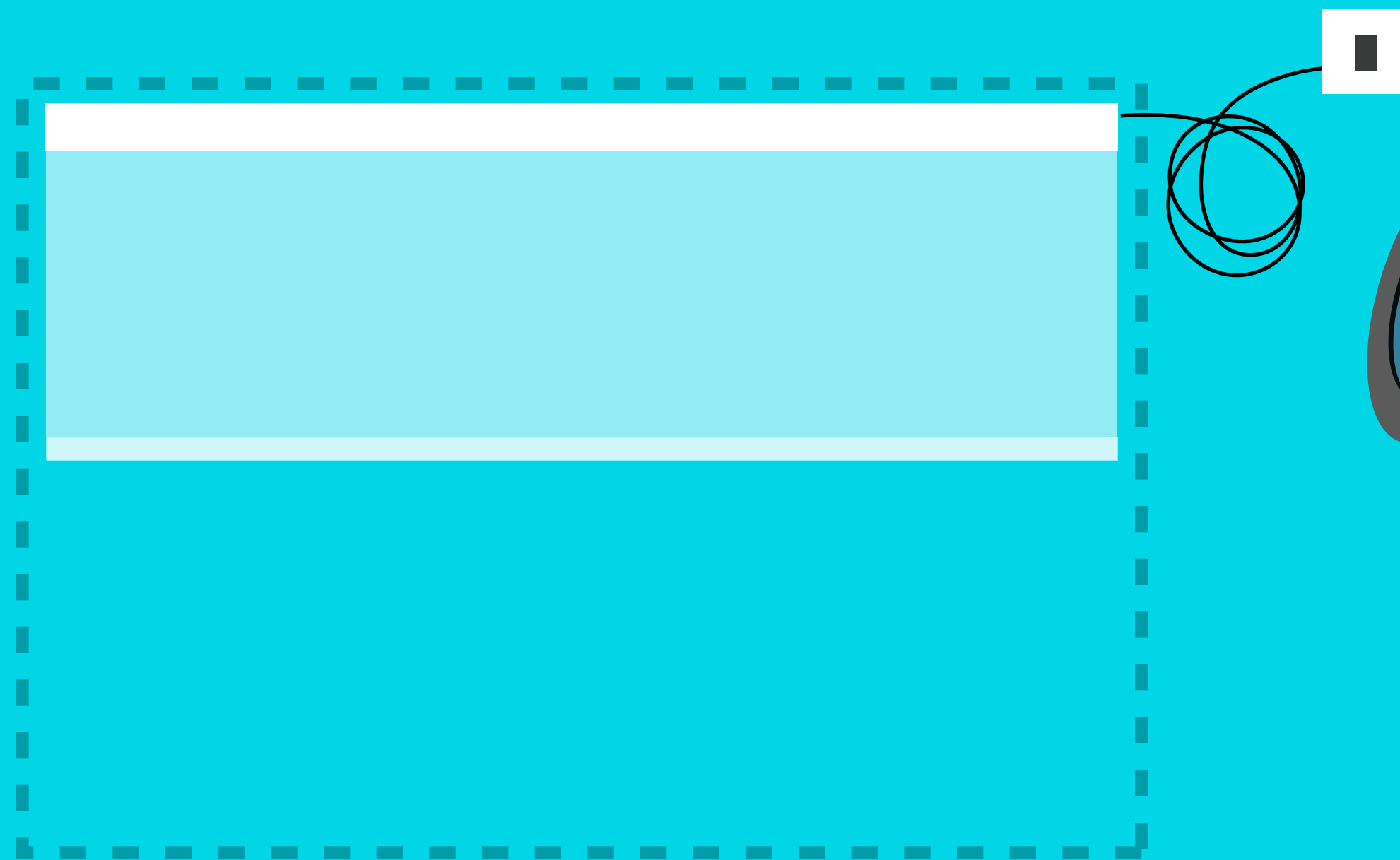
Snake the wire and pin it behind your blind



Loop the wire - this works best when you can drop the spare wire into a wall cavity

"SOMFY WIRING ANOTHER WARNING!

If the power cord gets cut accidentally during installation (and it happens) you'll need a new blind...



A sharp-eyed electrician 'tidying up' your wiring can be an expensive mistake

*Accidents happen.
Communications fail.
And it's easy to forget...*

*But if you've got it covered,
the **Sonesse 40RTS** is a
REALLY great motor.*



"SOMFY TECHNOLOGY

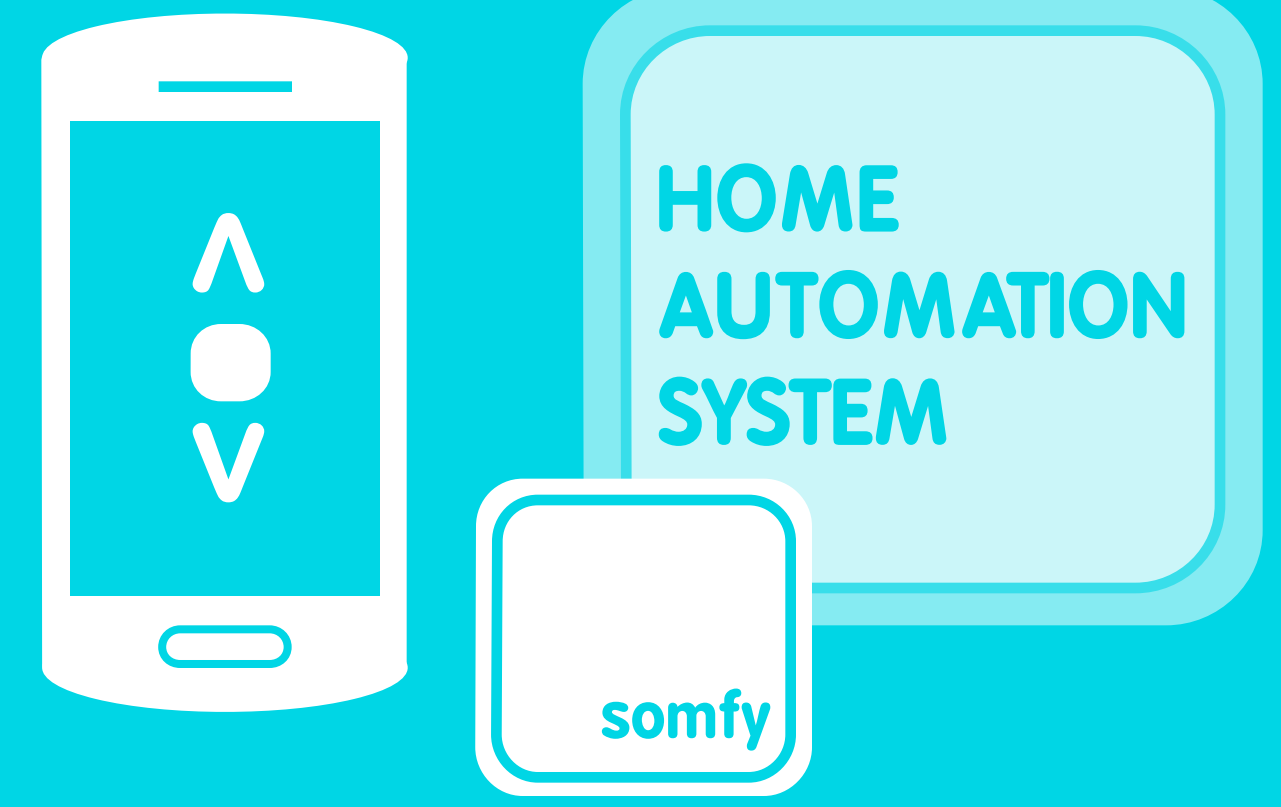
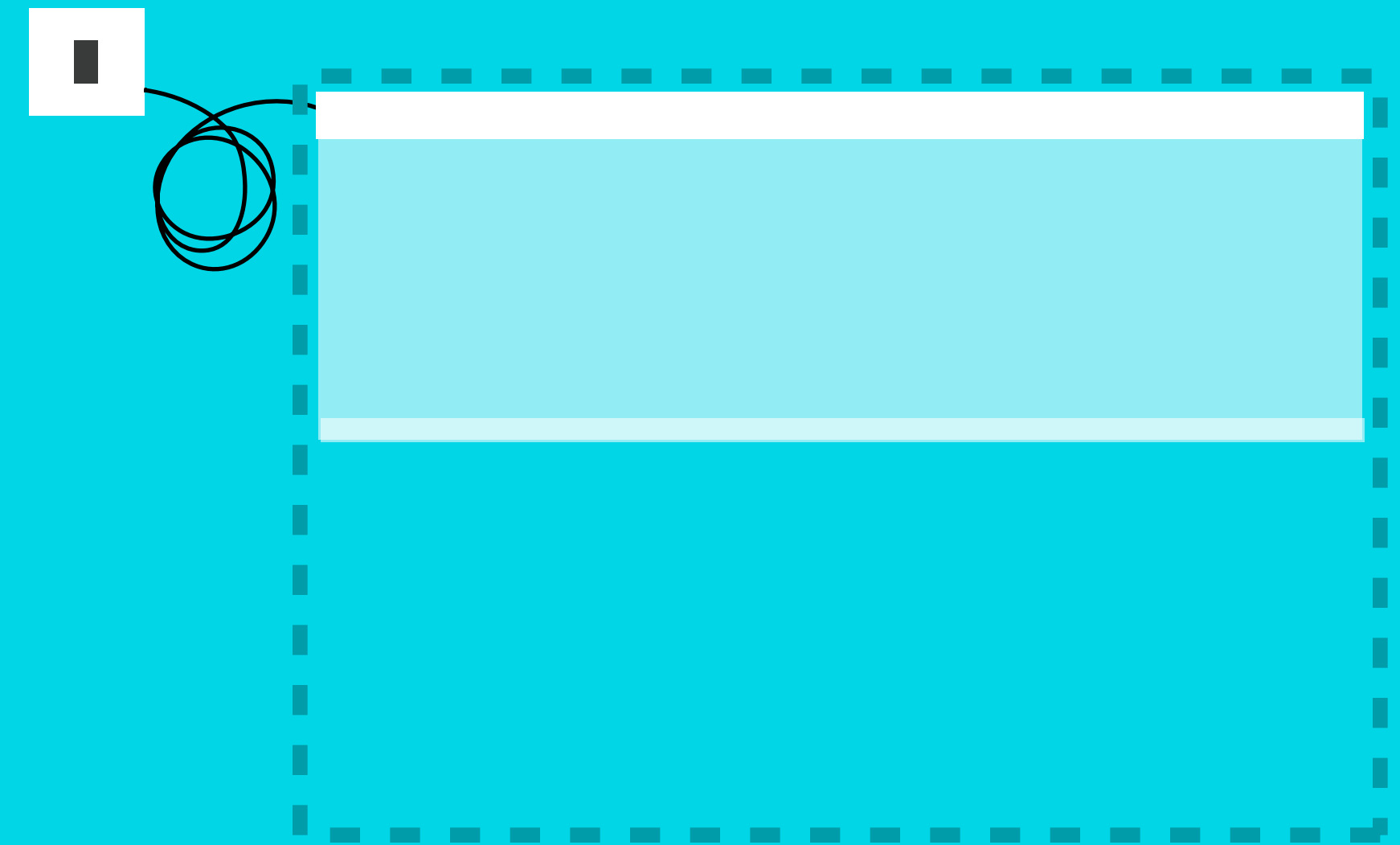
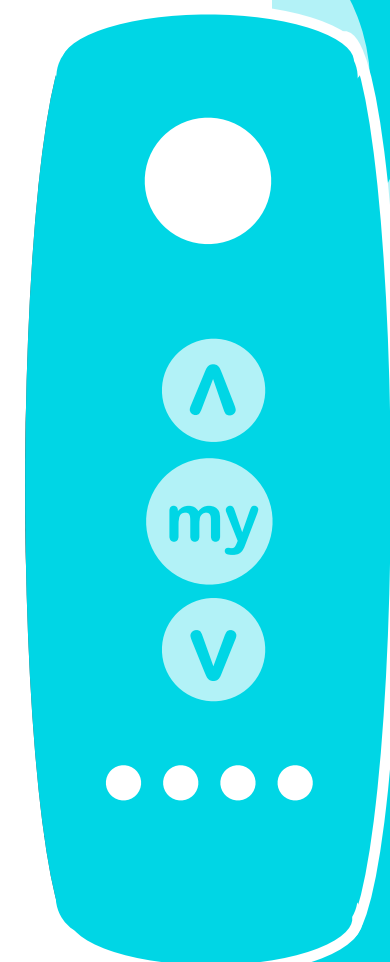
WIRELESS INTEGRATION TO YOUR HOME AUTOMATION SYSTEM

Somfy RTS technology enables easy wireless integration to your home automation system via a spare DRY CONTACT PORT.

You'll require an RTS Dry Contact Transmitter for every blind motor.

Connection is simple and quick. Once connected, your engineer can programme your blinds to be operated via your HA System or enabled SmartPhone or Tablet

And if you want, you can still use your Somfy remote controls.



RTS Dry Contact Transmitter

REMOTE CONTROLS

SOMFY REMOTE CONTROLS can be wall-mounted or handheld. They're available with 1, 4 and 16 channels & are supplied in white as standard



Top & Bottom 'Limits'

Operation is simple – once the blind has had its 'limits' set (the open position and the closed position) you simply tap either the 'UP' button' or the 'DOWN' button once and the blind will set off.

Operation is strictly 'PRESS ONCE' – you don't need to keep pressing the button – the blind will move up or down until it reaches its programmed 'limit' position.

You can stop your blind at any point while it's moving and adjust its position to suit.

Optional Intermediate 'Limit'

You'll probably have a height your blinds regularly hang on a day-to-day basis. This position is easily set (using the remote control) and adjusted in-situ.

To trigger the intermediate position, press the middle **STOP** button at any point when your blind is stationary and the blind will automatically travel to your preferred position.

“TECHNICAL DATA

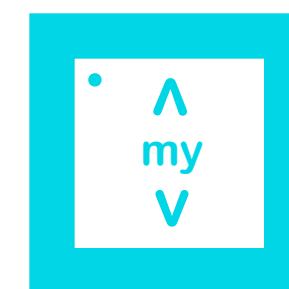
SOMFY

Product Code	Sonesse 40 RTS
Torque	3Nm / 6Nm
Speed	30RPM
Minimum blind width	610mm
Power cable length	2500mm
Aerial	** inside power cable **
Power consumption	100W
Current	.44A
Thermal work time	4 minutes
Protection factor	IP31
Limit Switch Type	electronic
Sound Level	44dBA
Radio Frequency	433.43 MHz rolling code
wireless HA integration	YES

motor




TELIS



SMOOVE

colours	white or black	White / Black / Silver
models	Single, 4 & 16 channel	Single channel
style	hand-held with wall-mount	wall-mount
timer option	available on other models	available on other models
sun / heat sensor	available as an add on	available as an add on

wireless remote options



MOTORISED SOMFY ROLLER BLINDS

**A GUIDE TO:
WIRING & CONTROLS**

for ROLLER BLINDS powered by
SOMFY SONESSE 40 240v RTS motors

electroblind.co.uk
specialists in motorised blinds